

ESTROTECT™ HEAT DETECTOR Mounting Evidence.™



DON'T BREED



BREED

Available in 5 Colours



TOP TIPS FOR HEAT DETECTION

Heat Detection is a vitally important activity on the modern dairy farm, as units get larger and milk production increases detecting cows in standing heat has never been harder. Artificial Insemination is targeted to improve the herd – but again provides a narrow window for getting cows pregnant.

EstroTECT Heat Detectors have been used by thousands of farmers, vets and AI Technicians over the last 8 years, detecting cows in Oestrus, getting more cows in calf and freeing up valuable time on farm.

Over the years we have built up a farming knowledge of how to get the best from EstroTECT, particularly how to apply it, how the various colours can help manage your cow's cycle and tips to avoid false readings.

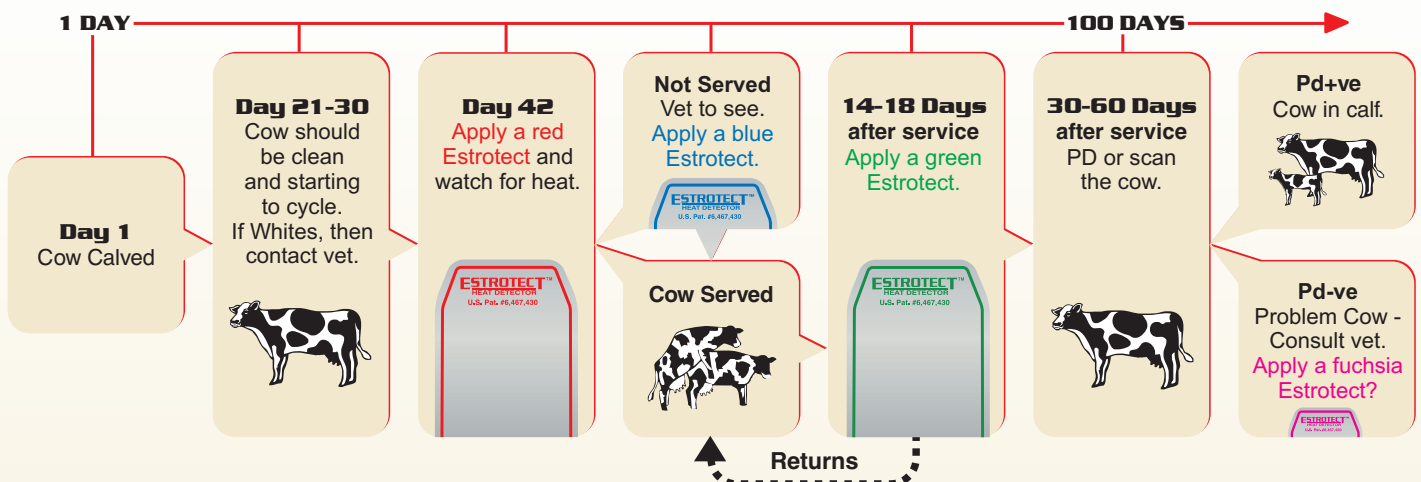
This guide was constructed to help you get the best from EstroTECT Heat Detectors and improve heat detection in your herd.

HEAT DETECTION TIPS FOR YEAR ROUND CALVING HERDS*

- Start recording Heat 6 weeks before service.
- Check cows after evening milking, before it gets dark and first thing in morning – ideally 5 times a day, or twice a day for longer periods of 30 minutes.
- Keep a notepad and pen on you.
- Watch cows away from the feed fence.
- Hot weather, high production, crowded conditions or high stress environments may curb mounting activity. Adjust your observations accordingly.
- Cows in standing heat average about 1.5 mounts per hour and are in heat six to eight hours.
- Cows may be willing to mount others even though neither may stand for mounting.
- Cows in pre-oestrus may bawl, be restless, lick or head butt other cows.
- Use EstroTECT Heat Detectors in the following programme to help get your cows in calf within 100 days of the last calf.



FERTILITY MANAGEMENT PROGRAMME USING ESTROTECT HEAT DETECTORS



*Courtesy of Paddy Gordon at the Shepton Vet Group and Dave Wilson Herd Manager at AJ & RG Barber

TROUBLE SHOOTING FALSE POSITIVES WITH ESTROTECT HEAT DETECTORS



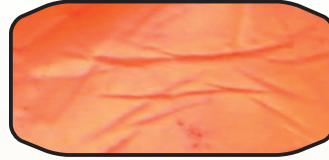
Newly applied Estroprotect

Grey foil layer unmarked, Patch has been heated up to body temperature, cow prepared by brushing with the hair, wiping application area with soft cloth and firmly applied with no creases across tail head.



Starting to activate

Grey foil starting to remove after 2-3 mounts and base layer showing through. It is best to leave for a few more hours or indeed overnight to see more activity. **“Read them at night - Breed them in morning”**



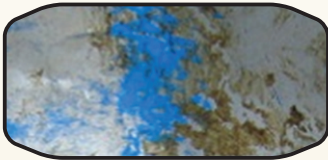
Positive Estroprotect device

When bulling well, the grey foil surface is rubbed off to reveal base colour. Colour will be intense and easily noticed. Creases can be seen on Estroprotect on close inspection.



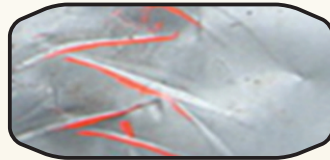
Make use of the colour range

Use the colour range to help in serving decisions. Red can be used on cows from 40 days calved with all cows served when suspected in heat. Other colours can be used 14 days after service to pick up returns and for PD negative cows.



Limited heat expression

Only part of foil surface is removed as limited number of mounts. Check behaviour for other signs of bulling. Check for dirty coat and rub marks indicating bulling but not seen. Check records to see if due to return.



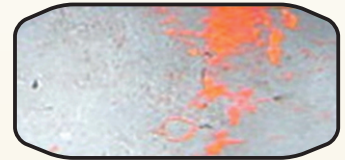
False heat from cubicle knock

Changes to side of device, not over the spine. Creasing more obvious. Is likely to be due to cubicle knock. Do not serve. Change Estroprotect and observe for changes.



Tail flick changes

Changes to side of Estroprotect, with scratches from tail swish and faecal material. Trim tail or reposition Estroprotect further down the back to avoid tail flicking onto device.



No change

If no change in 3 weeks then cow may not be cycling (slight changes expected on exposed ridge, and no creases). Get vet to check and bring bulling. Avoid hollows in front of tail head.

HOW TO GET THE BEST FROM ESTROTECT HEAT DETECTORS

Estroprotect Heat Detection patches are made from colour impregnated vinyl, are strong, resistant to tearing and colour fading, they are presented in sheets of 5 units, with a thin layer of heat sensitive glue on the back of each patch and are easy to peel off prior to application.

The most important aspect is to heat the patches to around body temperature 38°C/100°F. This can be done deep in the pocket, near a heat source or around a container or bottle of hot water. For larger quantities such as block calving herds an insulated picnic box may be filled with bottles of hot water and the Estroprotect placed on top.

The patches should stay on for up to 6 weeks and can be pulled off or replaced as required. Occasionally in the moulting season a dab of EVO-STIK type glue on the back of the patch will help adhesion to cows with very flaky skin or loose hair.

ESTROTECT IS AVAILABLE IN 5 BRIGHT COLOURS AND WITH THE FOLLOWING ACCESSORIES:

50 units with a free cleaning cloth

ET/001-50 Red/Orange
ET/002-50 Green
ET/003-50 Fuchsia
ET/004-50 Blue
ET/005-50 Yellow

10 units

ET/001-10 Red/Orange
ET/002-10 Green
ET/003-10 Fuchsia
ET/004-10 Blue
ET/005-10 Yellow



Accessories

ET/006 Rubber Anti-static Cleaning Brush
ET/007 Tacky Cleaning Clothes which attract dirt, dust, loose hair and skin
ET/008 EVO-Stick Glue 250ml – For use in moulting season etc
ET/3003 Estroprotect Management Programme and Application Procedure

